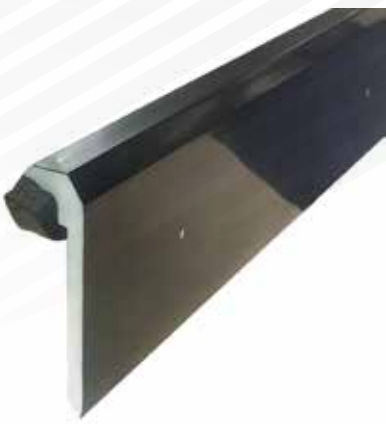


# CHECK KERB TRIM



**FIX-R Check Kerb Trim increases the installation ease, speed and improves the appearance of your roof edge.**

- Creates a 20mm upstand at the roof edge
- Smooth, hi-gloss finish - easy to keep clean and great looking
- 10mm x 15mm sealing compression foam, factory fitted to the underside of the trim to create a water tight seal to the membrane, over seams and detailing joints
- Pre-drilled fixing holes, for accurate and fast installation
- Complete range of colour matched joints and corner accessories

## Description

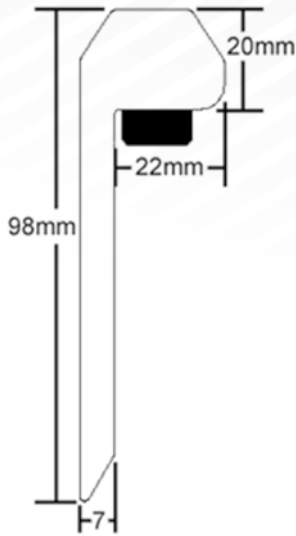
This trim features a compression seal along the underside to create a water tight seal to the FIX-R EPDM membrane. This trim eliminates the need for creating a timber upstand as a water check at the roof perimeter.

Manufactured from co-extruded u-PVC creating a solid foam construction with hard wearing, durable properties. This is the same technology as used in u-PVC fascia manufacture.

## Intended Uses

For creating a water check to flat and low sloping roofs with FIX-R EPDM membrane.

## Installation



- 1 Before installation of the membrane, ensure a solid fixing can be achieved at the perimeter of the roof. A timber fixer can be installed if required.
- 2 Install the membrane to the roof surface as per specifications.
- 3 Ensure the membrane extends down the vertical edge of the roof by a minimum of 50mm.
- 4 Position the edge trim onto the roof surface so the sealant foam is compressed by 30% and the face of the trim is in a vertical position.
- 5 Using the 50mm PolyTop nails fix the edge trim into position. A fixing must be in each pre-drilled hole to achieve correct installation.
- 6 Position the next length of front plate leaving a 1mm expansion gap for each metre of trim used. Ensure that each trim has foam seal extending up the end to create a seal between trim lengths.
- 7 Fit the cover clips at each joint between lengths of trim.
- 8 Install corners or stop ends where needed.

## Typical Properties & Characteristics

<b>Material</b>	Co-extruded u-PVC
<b>Colour</b>	Black or white
<b>Trim Length</b>	2.5m
<b>Additional Components</b>	Trim Joints, Internal Corners, External Corners

Date of issue: Mar 19