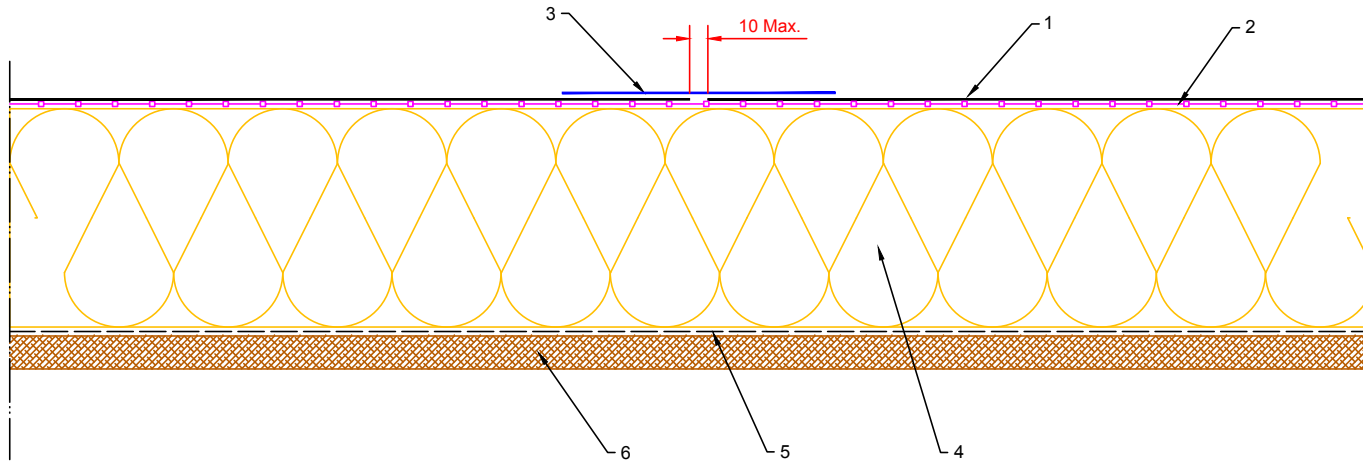
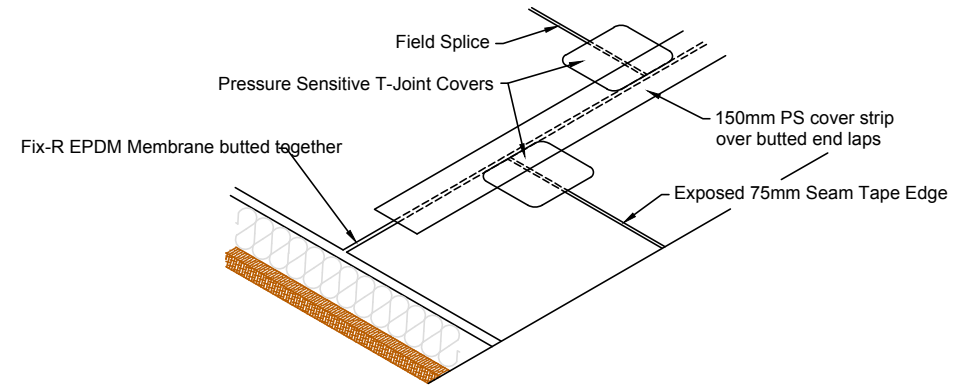



1. Fix-R EPDM Membrane
2. Fix-R EPDM Decking Adhesive (See Notes)
3. Fix-R EPDM 150mm PS Cover Strip
4. Suitable thermal insulation, thickness determined by U-value
5. Vapour Control Layer (VCL)
6. Structural decking



Notes:

1. This detail was prepared to serve as a guideline representing typical detailing conditions and illustrate the correct application of Fix-R EPDM products only. It may be necessary to modify this detail in whole or part in accordance with specific project conditions, design or requirements.
2. Acrylic Decking Adhesive is for timber substrates only, all other suitable surfaces use Fix-R EPDM Bonding Adhesive.
3. Prior to installation of 150mm Cover Strip apply Fix-R EPDM Primer to splice area.
4. At field splice intersections apply a section of 225mm Uncured Elastoform Flashing as cover patches.



	Title		END LAP SPLICE / PS COVER STRIP		Drawn	Checked	Approved	Scale	Date	
	Product		CB-S-2		MFO	DW	DW	1: 4@A4	03.02.14	
	A		03.02.14	PRODUCTION Issue		Status PRODUCTION				
	Rev		Date	Comments		Drawing No: CB/S/2				Rev: A