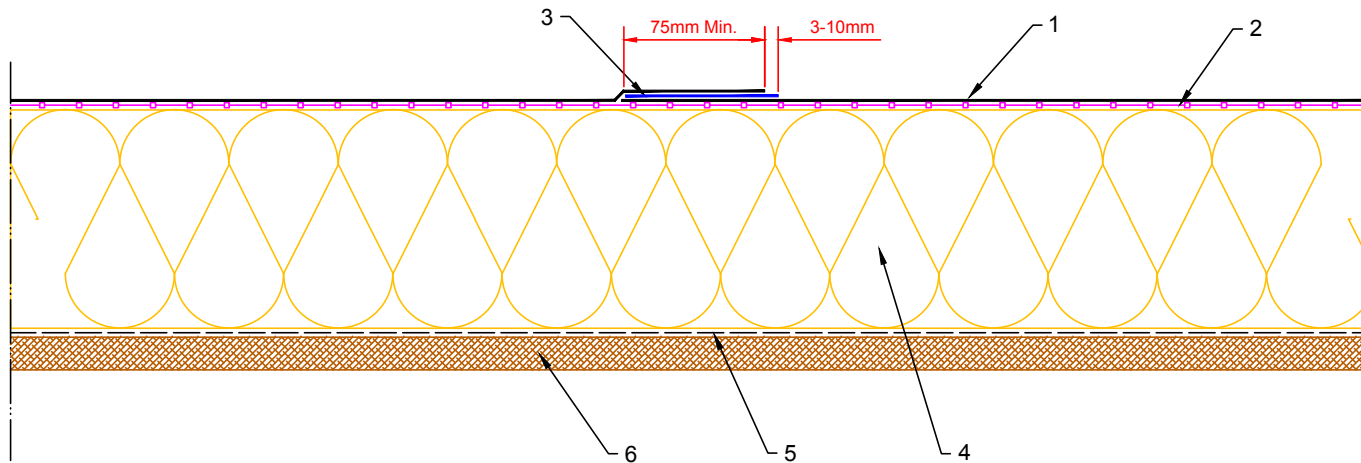


1. Fix-R EPDM Membrane
2. Fix-R EPDM Decking Adhesive (See Notes)
3. Fix-R EPDM 75mm Splice Tape
4. Suitable thermal insulation, thickness determined by U-value
5. Vapour Control Layer (VCL)
6. Structural decking



Notes:

1. This detail was prepared to serve as a guideline representing typical detailing conditions and illustrate the correct application of Fix-R EPDM products only. It may be necessary to modify this detail in whole or part in accordance with specific project conditions, design or requirements.
2. Acrylic Decking Adhesive is for timber substrates only, all other suitable surfaces use Fix-R EPDM Bonding Adhesive.
3. Prior to installation of 75mm Splice Tape apply Fix-R EPDM Primer to splice areas.
4. At field splice intersections apply a section of Fix-R EPDM 225mm Uncured Elastoform Flashing as cover patches - refer to detail 150mm Seam



Title		MEMBRANE SPLICE WITH 75mm SEAM TAPE	
Product		CB-S-1	

Rev	Date	Comments
A	03.02.14	PRODUCTION Issue

Drawn	Checked	Approved	Scale	Date
MFO	DW	DW	1: 4@A4	03.02.14
Status				
PRODUCTION				
Drawing No:				Rev:
CB/S/1				A