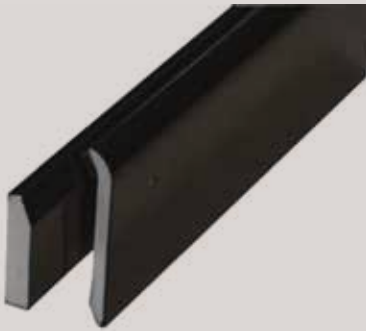


**PRODUCT DATA SHEET**

# Gutter Trim - Standard Back Plate

**Features & Benefits**

- **10mm thick Back Plate, creating a smooth, straight surface to form the membrane onto**
- **Bevelled edge on back plate to ensure easy alignment of the front plate**
- **75mm deep front plate with compression sealing foam along the top edge to create a water tight seal to the membrane, over seams and detailing joints**
- **Pre-drilled fixing holes, for accurate and fast installation of the front plate**
- **Complete range of colour matched joints and corner accessories**

**Description**

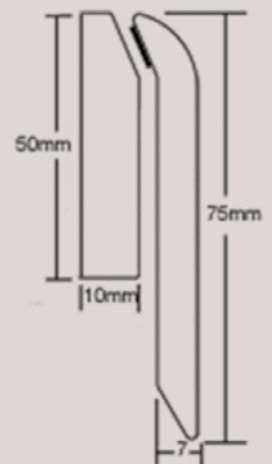
FIX-R Standard Gutter Trim increases the speed and improves the appearance of your gutter drip installation. This 2 part trim is installed in conjunction with a timber batten on to the fascia. This is a two part trim, the back plate and the front plate, with compression seal along the top edge. Both sections are manufactured from co-extruded u-PVC creating a hard wearing, durable product.

**Intended Uses**

For creating a gutter drip edge to flat and low sloping roofs with FIX-R EPDM membrane.

**Installation**

- 1) Fix a timber batten to the front of the fascia, ensuring the top edge is level with the top of the decking. If there is an existing batten ensure it is in suitable condition to get a sound fixing into.
- 2) Install the back plate onto the batten. Ensure that a 1mm expansion gap is left between lengths for each metre of trim used.
- 3) Dress the membrane down the face of the back plate. For best results bond the membrane to the top and front of the back plate.
- 4) Position the front plate onto the rubber so the sealant foam is compressed by 30% and the top edge of the front plate is below the level of the membrane.
- 5) Using the 50mm PolyTop nails, fix the front plate into position. A fixing must be in each pre-drilled hole to achieve full compression.
- 6) Position the next length of front plate leaving a 1mm expansion gap for each metre of trim used.
- 7) Trim the excess membrane off below the back plate.
- 8) Fit the cover clips at each joint between lengths of trim.



#### Typical Properties & Characteristics

<b>Material</b>	<b>Co-extruded u-PVC</b>
<b>Colour</b>	<b>Black or white</b>
<b>Trim Length</b>	<b>2.5m</b>
<b>Additional Components</b>	<b>Trim Joints, Internal Corners, External Corners</b>



Harding Way,  
St Ives,  
Cambridgeshire,  
PE27 3YJ

Tel: 01480 466777  
Fax: 01480 290133

Email: [info@fix-r.co.uk](mailto:info@fix-r.co.uk)  
Web: [www.fix-r.co.uk](http://www.fix-r.co.uk)