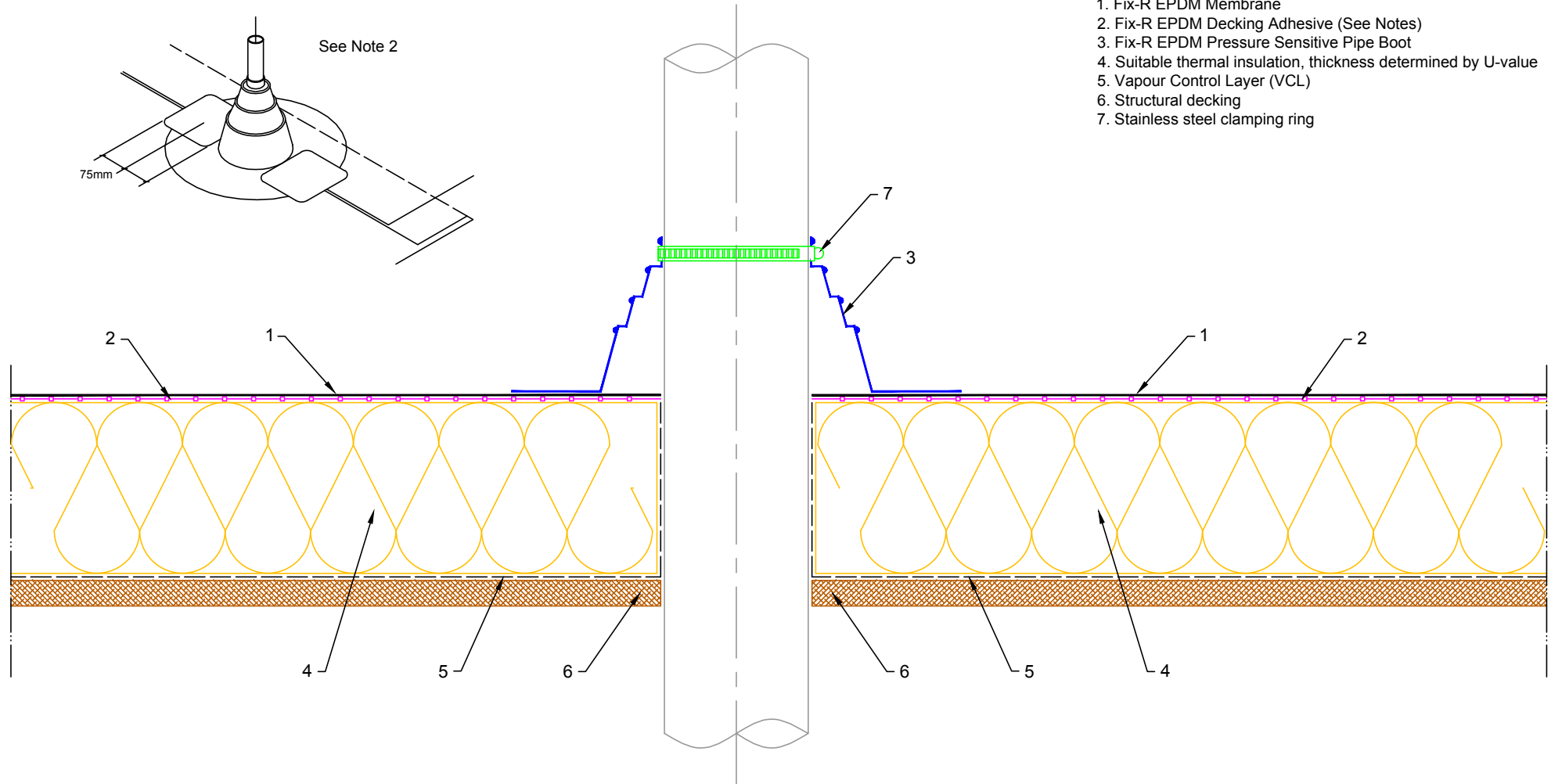


1. Fix-R EPDM Membrane
2. Fix-R EPDM Decking Adhesive (See Notes)
3. Fix-R EPDM Pressure Sensitive Pipe Boot
4. Suitable thermal insulation, thickness determined by U-value
5. Vapour Control Layer (VCL)
6. Structural decking
7. Stainless steel clamping ring



- Notes:
1. This detail was prepared to serve as a guideline representing typical detailing conditions and illustrate the correct application of Fix-R EPDM products only. It may be necessary to modify this detail in whole or part in accordance with specific project conditions, design or requirements.
 2. Acrylic Decking Adhesive is for timber substrates only, all other suitable surfaces use Fix-R EPDM Bonding Adhesive.
 3. Where Pre-fabricated pipe flashing intersects a field splice cover patches must be installed using Fix-R EPDM 25mm Uncured Elastofom Flashing Tape.
 4. This detail is suitable for pipes 25mm - 150mm in diameter.



Title PRE-FABRICATED PIPE SEAL	
Product CB-P-2	
A	03.02.14
Rev	Date

PRODUCTION Issue	
Comments	

Drawn MFO	Checked DW	Approved DW	Scale 1: 4@A4	Date 03.02.14
Status PRODUCTION				
Drawing No: CB/P/2				Rev: A