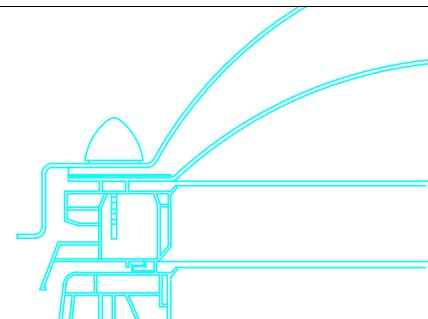
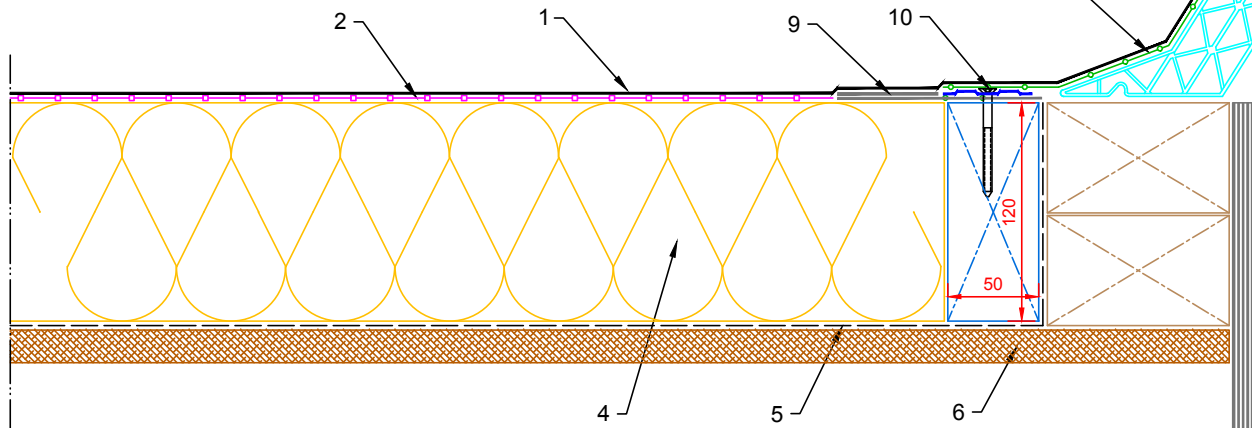


Notes:

1. This detail was prepared to serve as a guideline representing typical detailing conditions and illustrate the correct application of Fix-R EPDM products only. It may be necessary to modify this detail in whole or part in accordance with specific project conditions, design or requirements.
2. Acrylic Decking Adhesive is for timber substrates only, all other suitable surfaces use Fix-R EPDM Bonding Adhesive.
3. Prior to installation of Pressure Sensitive Tape apply Fix-R EPDM Primer to splice areas.

1. Fix-R EPDM Membrane
2. Fix-R EPDM Decking Adhesive (See Notes)
3. Fix-R EPDM Bonding Adhesive
4. Suitable thermal insulation, thickness determined by U-value
5. Vapour Control Layer (VCL)
6. Structural decking
7. Fix-R EPDM Pressure Sensitive EPDM Tape
8. Skylight (by others)
9. Reinforced Universal Secure Strip (RUSS)
10. Suitable Fastener with 50mm Seam Plate



Title		SKYLIGHT DETAIL (PS TAPE)	
Product		CB-SK-1	
A	03.02.14	PRODUCTION Issue	
Rev	Date	Comments	

Drawn	Checked	Approved	Scale	Date
MFO	DW	DW	1: 4@A4	03.02.14
Status		PRODUCTION		
Drawing No:				Rev:
CB/SK/1				A