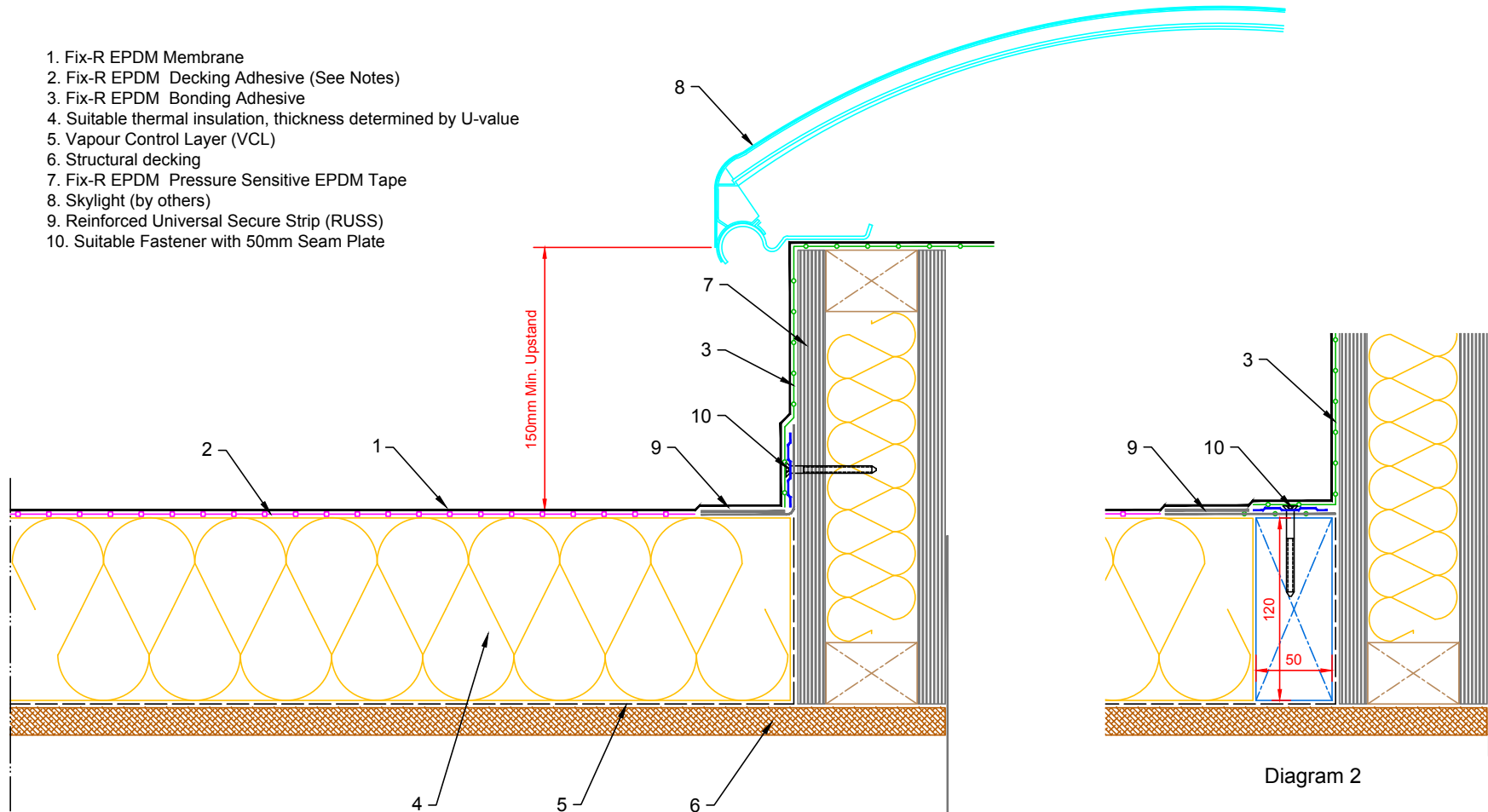


1. Fix-R EPDM Membrane
2. Fix-R EPDM Decking Adhesive (See Notes)
3. Fix-R EPDM Bonding Adhesive
4. Suitable thermal insulation, thickness determined by U-value
5. Vapour Control Layer (VCL)
6. Structural decking
7. Fix-R EPDM Pressure Sensitive EPDM Tape
8. Skylight (by others)
9. Reinforced Universal Secure Strip (RUSS)
10. Suitable Fastener with 50mm Seam Plate



Notes:  
 1. This detail was prepared to serve as a guideline representing typical detailing conditions and illustrate the correct application of Fix-R EPDM products only. It may be necessary to modify this detail in whole or part in accordance with specific project conditions, design or requirements.  
 2. Acrylic Decking Adhesive is for timber substrates only, all other suitable surfaces use Fix-R EPDM Bonding Adhesive.  
 3. See Diagram 2 for alternate fixing method.



Title		SKYLIGHT TIMBER UPSTAND	
Product		CB-SK-2	
Rev	Date	Comments	
A	03.02.14	PRODUCTION Issue	

Drawn	Checked	Approved	Scale	Date
MFO	DW	DW	1: 4@A4	03.02.14
Status				
PRODUCTION				
Drawing No:				Rev:
CB/SK/2				A