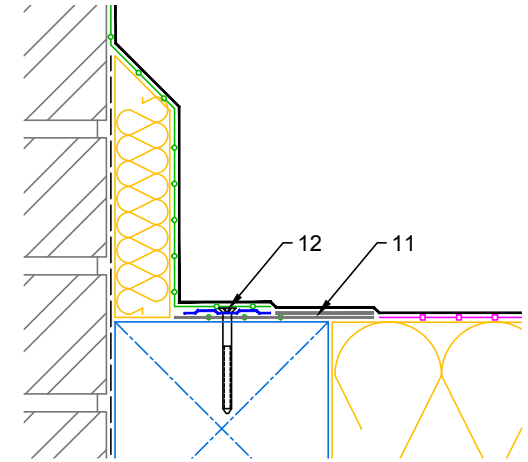
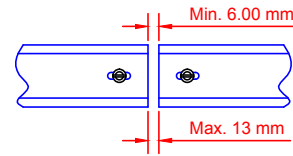


1. Fix-R EPDM Membrane
2. Fix-R EPDM Decking Adhesive (See Notes)
3. Fix-R EPDM Bonding Adhesive
4. Suitable thermal insulation, thickness determined by U-value
5. Vapour Control Layer (VCL)
6. Structural decking
7. Fix-R EPDM Termination Bar
8. Thermal insulation to detail where applicable
9. Fix-R EPDM Lap Sealant or suitable sealant by others
10. Fix-R EPDM Water Cut Off Mastic
11. Reinforced Universal Secure Strip (RUSS)
12. Suitable Fastener with 50mm Seam Plate



Notes:

1. This detail was prepared to serve as a guideline representing typical detailing conditions and illustrate the correct application of Fix-R EPDM products only. It may be necessary to modify this detail in whole or part in accordance with specific project conditions, design or requirements.
2. Acrylic Decking Adhesive is for timber substrates only, all other suitable surfaces use Fix-R EPDM Bonding Adhesive.
3. If 75mm field seam turns up through angle change install PS cover patch using 225mm uncured EPDM tape.
4. Alternate fixing detail for RUSS as shown in diagram 2.



Title
TERMINATION BAR DETAIL

Product
CB-W-2

Drawn	Checked	Approved	Scale	Date
MFO	DW	DW	1: 4@A4	03.02.14

Status
PRODUCTION

Drawing No:	Rev:
CB/W/2	A

A	03.02.14	PRODUCTION Issue
Rev	Date	Comments