

FIX-R LIQUID ROOFING SPECIFICATION

Warm Roof Insulation or Rock Wool Recovery Board

1. Preparation

Please ensure that a suitable vapour barrier is correctly applied (if required) on to the roof deck prior to the fixing of the insulation. Additionally, that a hard edge around the perimeter of the roof must be created to support the outside edges of the insulation/ recovery board, using suitably sized treated timber.

FIX-R Fully Bonded Insulation Board/ Rock Wool Recovery Board or other suitable tissue faced insulation products must be installed according to manufacturer's instructions using either FIX-R PU adhesive or by mechanical fixing. The insulation boards must be dry, free from surface dust and other loose material before any further product application.

If there is an interface with a tiled or slated element the roofing materials should be stripped back/ pushed back to allow the waterproofing system to be dressed up the lay board by 300mm.

2. General Application

A. Surface Primer

FIX-R Liquid Roofing GP Primer must be applied and used at the coverage rate of approx. 0.1ltr per m². The Primer, when applied, will be a milky white colour and will dry to a translucent finish.

B. FIX-R Liquid Roofing System

In accordance with the minimum coverage rate of 1.2ltr m², apply approximately one third of the FIX-R Liquid Roofing in manageable sections over the primed substrate as the base layer using a brush or roller.

Immediately embed the FIX-R Liquid Roofing Reinforcing Fabric into the base layer and roll the surface with a perlon roller, eliminating potential air bubbles. Overlaps in the reinforcing fabric should be a minimum 75 mm. The remaining two thirds of FIX-R Liquid Roofing must be immediately applied over the reinforcing fabric as the top/ saturation layer (this is known as wet on wet). Roll out evenly until complete saturation is achieved. Ensure the overlap areas (above and below the overlapping fabric) are fully saturated to maintain continuity of the waterproofing system.

3. Application Sequence Detail

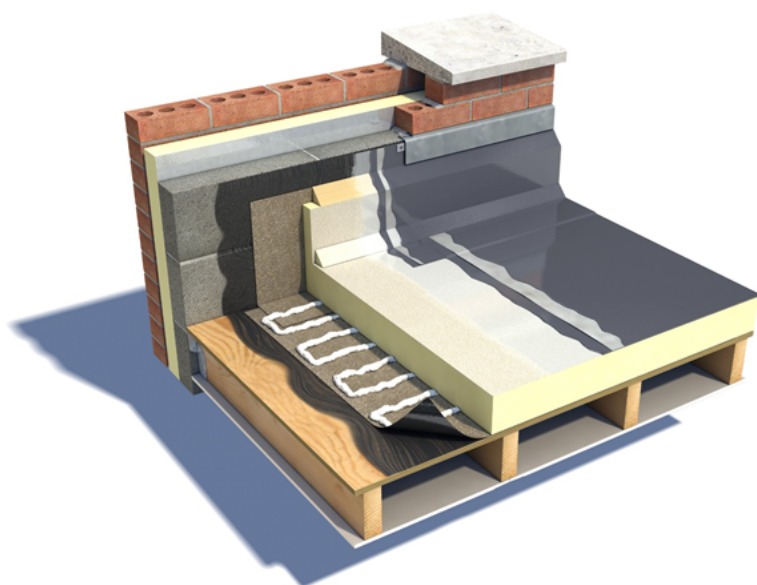
1. Insulation board joints – Use FIX-R Jointing Tape to cover all joints in the insulation/ recovery boards after the previously applied primer has fully cured to a translucent finish. FIX-R Jointing tape must also be used to cover the fixings if the boards have been mechanically fixed.

2. Roof Perimeter- Using 250mm Fabric and FIX-R Liquid Roofing waterproof the entire roof perimeter (as per general application point B above). Continue waterproofing up vertical surfaces a minimum of 150mm above roof finish height, i.e. decking, paving, ballast etc. Application at interfaces with pitched roof elevations should be at a minimum 300mm up the lay board.

3. Roof edge trims – Create the drip and retaining edges to the roof using the appropriate FIX-R GRP Roof Edge Trims after the roof perimeter detailing has been installed as per point 2 above

4. Roof Penetrations - Using 250mm Fabric and FIX-R Liquid Roofing (as per general application point B above), seal any items projecting through waterproofing material to render them watertight. Extend waterproofing vertically up penetrations a minimum of 150mm above roof finish height, i.e. decking, paving, ballast etc.

5. Roof Field – Using 1m Fabric and FIX-R Liquid Roofing (as per general application point B above), reinforce the entire roof field. Remember to overlap adjacent runs of Fabric at a minimum of 75mm.



This document should always be read in conjunction with all relevant Product and Safety Data Sheets